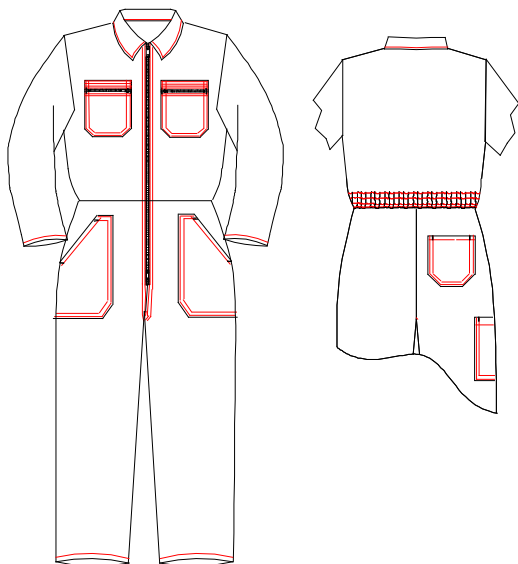


①

## COMBINAISON



## DESCRIPTIF DE BASE

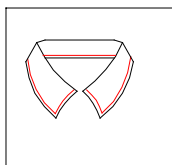
COL CLASSIQUE  
 MILIEU DEVANT FERMETURE METAL  
 2 POCHES POITRINE FERMETURES METAL  
 2 POCHES BASSES  
 1 POCHE DOS DROIT  
 1 POCHE METRE JAMBE DROITE  
 BAS MANCHES DROITS  
 ELASTIQUE DOS

ENTREJAMBES

90CM     100CM

### MODULATION PAR RAPPORT AU MODELE DE BASE

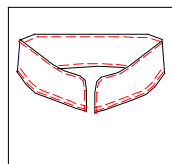
#### 1 COL



CLASSIQUE

SI COLORIS COL CONTRASTE

COLORIS:



OFFICIER

SI COLORIS COL CONTRASTE

COLORIS:

#### 2 FERMETURE DEVANT

FERMETURE METAL

FERMETURE SPIRALE

FERMETURE INJECTEE

FERMETURE INJECTEE  
CURSEUR PLASTIQUE

SOUS PATTE

GRIPPERS CACHES

VELCROS CACHES

GRIPPER A CALOTTE

BOUTON PRESSION

COLORIS:

NICKELE

BRONZE

GRIPPER CACHE

GRIPPER APPARENT

GRIPPER A CALOTTE

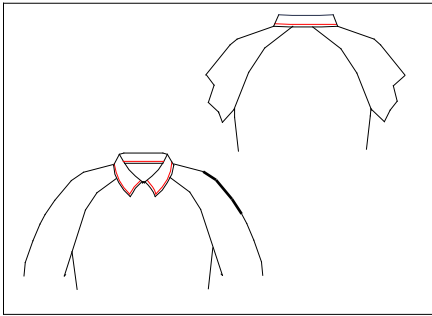
COLORIS:

BOUTON PRESSION

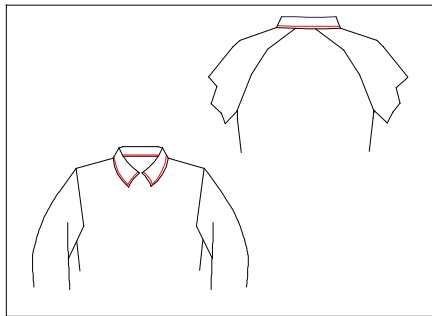
NICKELE  BRONZE

②

3 EMMANCHURES

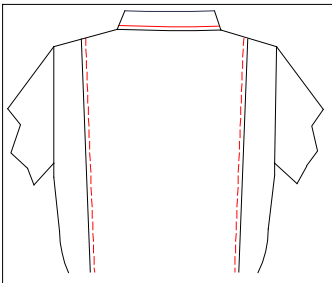


RAGLAN

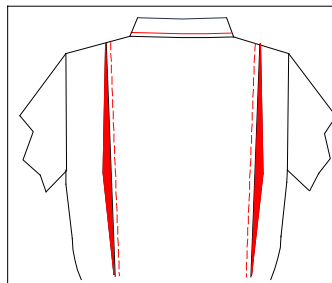


SEMI RAGLAN

4 DOS



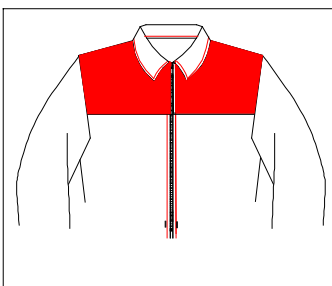
SOUFFLETS DOS



SOUFFLETS DOS  
CONTRASTE

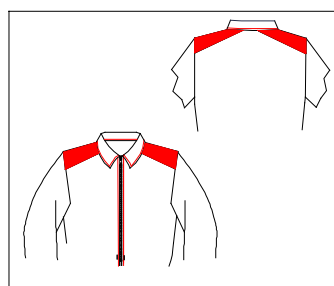
COLORIS:

5 EMPIECEMENT



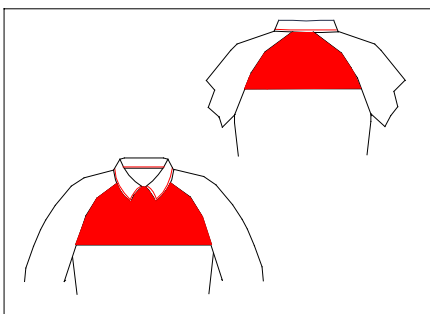
COLORIS:

- EMPIECEMENT DOS
- EMPIECEMENTS DOS+DEVANTS
- EMPIECEMENTS DEVANTS



COLORIS:

- EMPIECEMENTS EPAULES

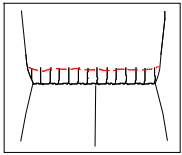


- EMPIECEMENT DOS
- EMPIECEMENTS DOS+DEVANTS
- EMPIECEMENTS DEVANTS

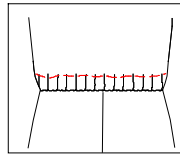
COLORIS:

③

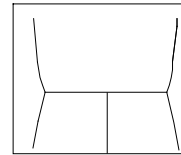
6 DOS



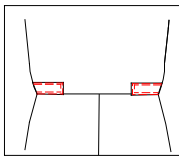
ELASTIQUE SOUS TUNNEL



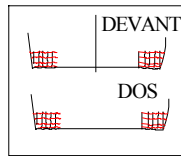
ELASTIQUE A BOUTONNIERES



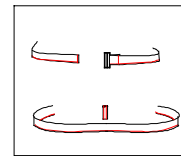
DOS DROIT



\*  DOS DROIT AVEC PATTES DE SERRAGE



ELASTIQUE COTES



CEINTURE AMOVIBLE SUR DOS DROIT

\* FERMETURE PATTES DE SERRAGE

BOUTON

GRIPPER APPARENT

GRIPPER CACHE

VELCRO APPARENT

GRIPPER A CALOTTE

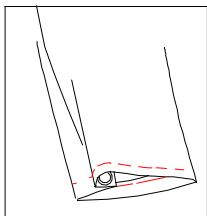
BOUTON PRESSION

VELCRO CACHE

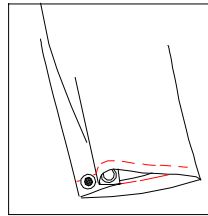
COLORIS:

NICKELE  BRONZE

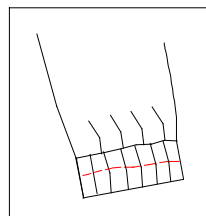
7 BAS MANCHES



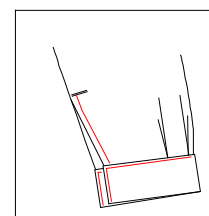
DROIT  
1 GRIPPER



DROIT  
GRIPPERS  
REGLABLES



ELASTIQUE



POIGNET

\* FERMETURE POIGNETS

BOUTON

GRIPPER APPARENT

GRIPPER CACHE

VELCRO CACHE

VELCRO APPARENT

GRIPPER A CALOTTE

BOUTON PRESSION

COLORIS:

NICKELE  BRONZE

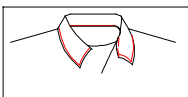
8 ACCESSOIRES

PORTE BADGE

QUEL EMPLACEMENT:

SI MOYEN DE FERMETURE INDIQUER LEQUEL:

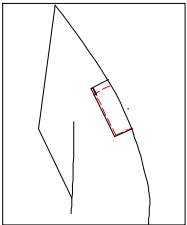
EN FORME DOS



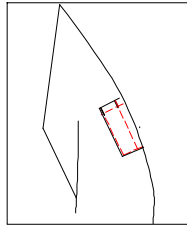
④

9 **POCHEMANCHE**

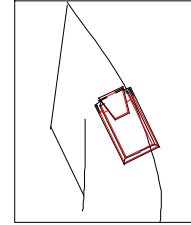
MANCHE GAUCHE  MANCHE DROITE



1 COMPARTIMENT STYLO



2 COMPARTIMENTS STYLO



\* POCHE PORTABLE

\* **FERMETUREPOCHE**

BOUTON  GRIPPER APPARENT  GRIPPER CACHE  VELCRO CACHE

VELCRO APPARENT  GRIPPER A CALOTTE  BOUTON PRESSION  
NICKELE  BRONZE

COLORIS:

COLORIS:

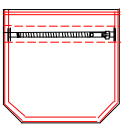
10 **POCHEINTERIEURE**

POITRINE COTE DROIT  POITRINE COTE GAUCHE

POCHE INTERIEURE PLAQUEE  SANS FERMETURE

POCHE INTERIEURE VOLANTE  SI FERMETURE QUEL MOYEN:

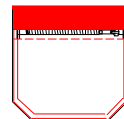
11 **POCHEPOITRINE**



A FERMETURE

1 POCHE   
2 POCHEs

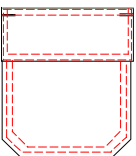
FERMETURE METAL   
FERMETURE SPIRALE   
FERMETURE INJECTEE   
FERMETURE INJECTEE CURSEUR PLASTIQUE



1 POCHE   
2 POCHEs

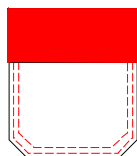
SI COLORIS HAUT POCHE CONTRASTE

COLORIS:



\* POCHE AVEC RABAT

1 POCHE   
2 POCHEs



\*

1 POCHE   
2 POCHEs

SI COLORIS RABAT CONTRASTE

COLORIS:

\* **FERMETUREPOCHE**

BOUTON  GRIPPER APPARENT  GRIPPER CACHE  VELCRO CACHE

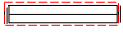
VELCRO APPARENT  GRIPPER A CALOTTE  BOUTON PRESSION  
NICKELE  BRONZE

COLORIS:

COLORIS:

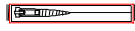
5

POCHEPOITRINE(SUITE)



POCHE PASSEPOILEE

- 1 POCHE
- 2 POCHE



- 1 POCHE
- 2 POCHE

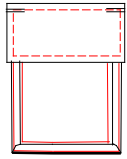
POCHE PASSEPOILEE  
FERMETURE:  
METAL

- SPIRALE
- INJECTEE

INJECTEE CURSEUR PLASTIQUE

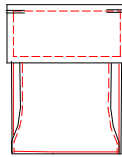
SI COLORIS LEVRES POCHE  
CONTRASTE

COLORIS:



POCHE 3 SOUFFLETS

- 1 POCHE
- 2 POCHE

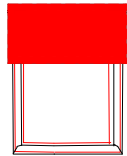


POCHE 2 SOUFFLETS

- 1 POCHE
- 2 POCHE

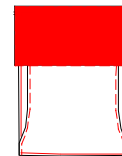


POCHE PORTABLE



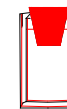
POCHE 3 SOUFFLETS \*

- 1 POCHE
- 2 POCHE



POCHE 2 SOUFFLETS \*

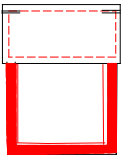
- 1 POCHE
- 2 POCHE



POCHE PORTABLE \*

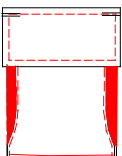
SI COLORIS RABAT  
CONTRASTE

COLORIS:



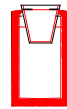
POCHE 3 SOUFFLETS \*

- 1 POCHE
- 2 POCHE



POCHE 2 SOUFFLETS \*

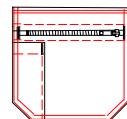
- 1 POCHE
- 2 POCHE



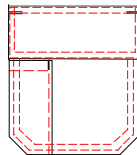
POCHE PORTABLE \*

SI COLORIS SOUFFLET  
CONTRASTE

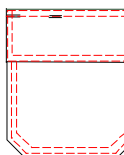
COLORIS:



POCHE STYLO  
SUR POCHE FG



POCHE STYLO  
SUR POCHE RABAT \*



POCHE STYLO  
OUVERTURE  
PAR RABAT \*



\* FERMETUREPOCHES

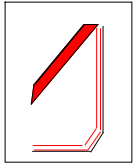


COLORIS:

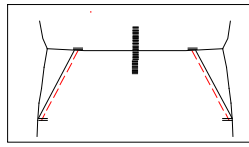


⑥

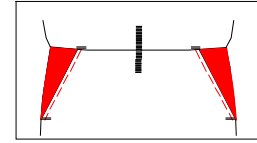
12 POCHEDEVANT



PAREMENT 3CM   
 COLORIS



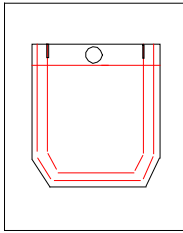
POCHES ITALIENNES



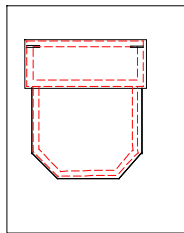
ENTREE DE  
 POCHES  
 ITALIENNES  
 CONTRASTE

COLORIS:

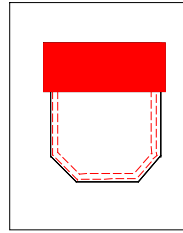
13 POCHE DOS



FERMETURE \*

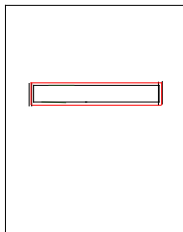


RABAT \*



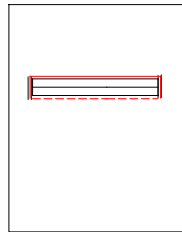
RABAT  
 CONTRASTE \*

COLORIS:



GILET \*

1 POCHE CONTRASTE  
 COLORIS:



PASSEPOILEE \*

1 POCHE CONTRASTE  
 COLORIS:

PAS DE  
 POCHE DOS

\* FERMETURE DE POCHE

BOUTON

GRIPPER APPARENT

GRIPPER CACHE

VELCRO CACHE

VELCRO APPARENT

GRIPPER A CALOTTE

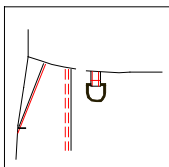
COLORIS:

BOUTON PRESSION

NICKELE

BRONZE

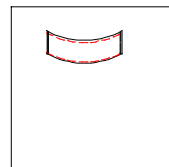
14 ACCESSOIRES



ETRIER

CEINTURE COTE GAUCHE

CEINTURE COTE DROIT

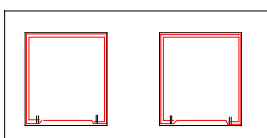


PORTE OUTIL  
 EN TISSU

JAMBE GAUCHE

JAMBE DROITE

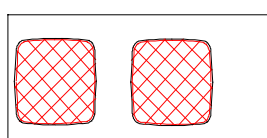
15 GENOUX



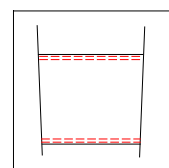
POCHES HYGROVET

EXTERIEUR

INTERIEUR



RENFORT MATELASSE

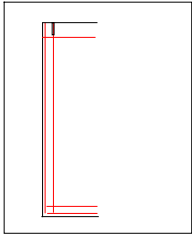


RENFORT SIMPLE  
 EXTERIEUR

RENFORT SIMPLE  
 INTERIEUR

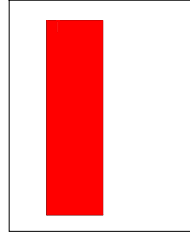
7

16 POCHECUISSSE



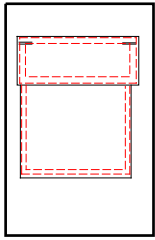
POCHE  
METRE  
A DROITE

PAS DE  
POCHE  
METRE



POCHE  
METRE  
A DROITE  
CONTRASTE

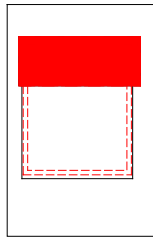
COLORIS:



SIMPLE A RABAT \*

1 POCHE

2 POCHE

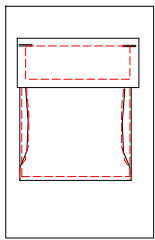


SIMPLE A RABAT CONTRASTE \*

1 POCHE

2 POCHE

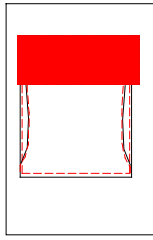
COLORIS:



2 SOUFFLETS \*

1 POCHE

2 POCHE

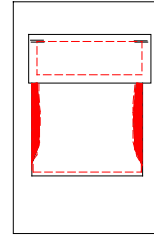


2 SOUFFLETS  
RABAT CONTRASTE \*

1 POCHE

2 POCHE

COLORIS:

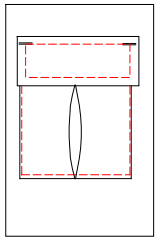


2 SOUFFLETS  
CONTRASTE \*

1 POCHE

2 POCHE

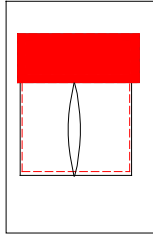
COLORIS:



SOUFFLET  
CENTRAL \*

1 POCHE

2 POCHE

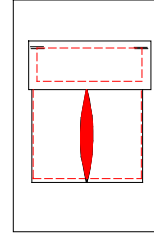


RABAT  
CONTRASTE \*

1 POCHE

2 POCHE

COLORIS:

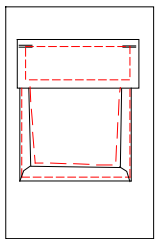


SOUFFLET  
CONTRASTE \*

1 POCHE

2 POCHE

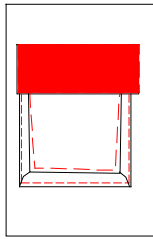
COLORIS:



3 SOUFFLETS \*

1 POCHE

2 POCHE

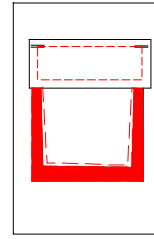


RABAT  
CONTRASTE \*

1 POCHE

2 POCHE

COLORIS:



SOUFFLET  
CONTRASTE \*

1 POCHE

2 POCHE

COLORIS:

\* FERMETURE DE POCHE

BOUTON

GRIPPER APPARENT

GRIPPER CACHE

VELCRO CACHE

VELCRO APPARENT

GRIPPER A CALOTTE

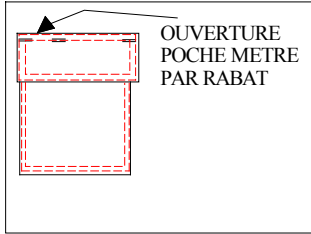
BOUTON PRESSION

NICKELE  BRONZE

COLORIS:

8

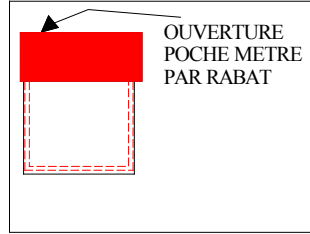
16 POCHE CUISSE(SUITE)



OUVERTURE  
POCHE METRE  
PAR RABAT

SIMPLE A RABAT \*

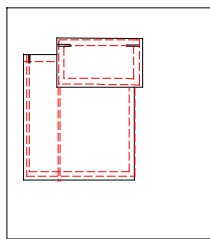
1 POCHE JAMBE DROITE



OUVERTURE  
POCHE METRE  
PAR RABAT

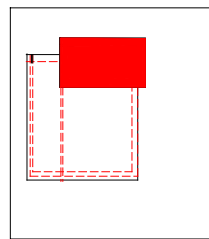
RABAT CONTRASTE \*

1 POCHE JAMBE DROITE



SIMPLE AVEC  
POCHE METRE  
ATTENANTE \*

1 POCHE JAMBE DROITE



SIMPLE AVEC  
POCHE METRE  
ATTENANTE  
RABAT CONTRASTE \*

1 POCHE JAMBE DROITE

COLORIS:

\* FERMETURE DE POCHE

BOUTON

GRIPPER APPARENT

GRIPPER CACHE

VELCRO APPARENT

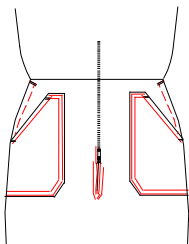
GRIPPER A CALOTTE

BOUTON PRESSION

COLORIS:

NICKELE  BRONZE

17 PASSE MAINS



SANS FERMETURE

GRIPPER

VELCRO

GRIPPER A CALOTTE COLORIS

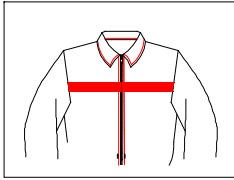
BOUTON PRESSION NICKELE

BRONZE



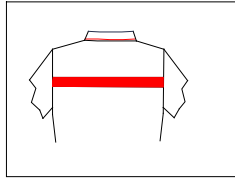
9

18 LISERE



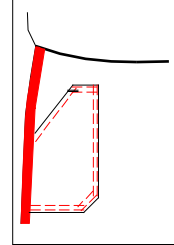
DEVANTS   
 1 CM   
 3 CM   
 5 CM

COLORIS:



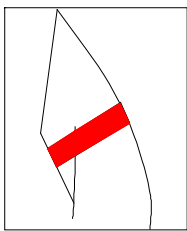
DOS   
 1 CM   
 3 CM   
 5 CM

COLORIS:



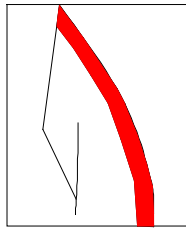
LE LONG  
DES JAMBES  
  
 1CM  
 3CM

COLORIS:



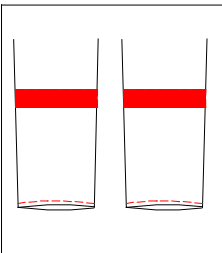
TOUR  
DE BRAS   
 1 CM   
 3 CM   
 5 CM

COLORIS:



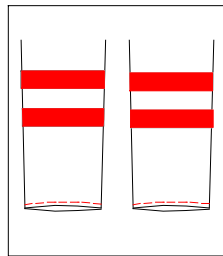
LE LONG  
DES BRAS   
 1 CM   
 3 CM   
 5 CM

COLORIS:



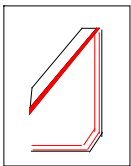
AUTOUR  
DES JAMBES:  
1 BANDE  
  
 3CM  
 5CM

COLORIS:



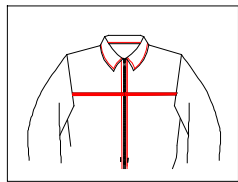
AUTOUR  
DES JAMBES:  
2 BANDES  
  
 3CM  
 5CM

19 JONC



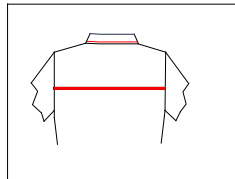
POCHE BASSE

COLORIS:



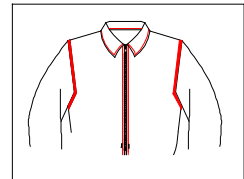
DEVANTS

COLORIS:



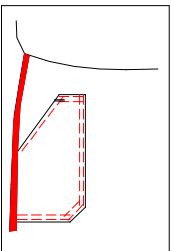
DOS

COLORIS:



EMMANCHURES

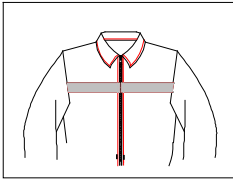
COLORIS:



LE LONG  
DES JAMBES

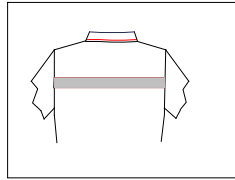
COLORIS:

20 BANDERETROREFLECHISSANTEGRISE



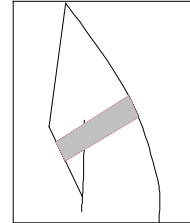
DEVANTS   
 3 CM   
 5 CM

1 BANDE   
 2 BANDES



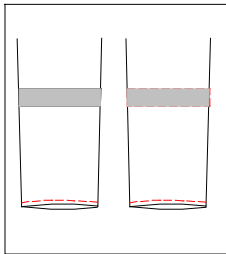
DOS   
 3 CM   
 5 CM

1 BANDE

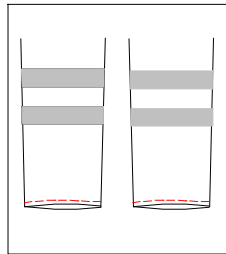


TOUR DE BRAS   
 3 CM   
 5 CM

1 BANDE   
 2 BANDES



AUTOUR DES JAMBES:  
 1 BANDE  
  
 3CM  
 5CM



AUTOUR DES JAMBES:  
 2 BANDES  
  
 3CM  
 5CM